

24



2022 | 2023

HEADWEAR CATALOGUE

EMBELISHMENTS

5-12

DESTINATION RANGE

SA19500	SA FLAG TRUCKER	14
---------	-----------------	----

PROMO RANGE

V5002	5 PANEL PROMO	17
V6009	6 PANEL BRUSHED COTTON	18
V6038	VALUE FADE RESISTANT CAP	19
V6001	SANDWICH BRUSHED COTTON	20
V5038	5 PANEL FADE RESISTANT	21

SUPERIOR RANGE

5001	SUPER 5 PANEL COTTON CAP	25
6009	RETAIL 6 PANEL CAP	25
M6001	METAL SANDWICH PEAK	26

PERFORMANCE RANGE

P19600	ENDURANCE	29
P19700	MARATHON	29
P17002	LASER AIRTECH	30
P21052	SUMMIT VISOR	30
6052	TWILL VISOR	31
6056	PERFORMER	32
S15052	THE ATHLETE	33
P17040	MULTI-SPORT MESH	33

FASHION RANGE

S19601	SUMMIT	37
F21501	5 PANEL SUMMER TRUCKER	38
6070	FASHION DENIM	38
C10603	EARTH LIFE	39
C10500	JERSEY TRUCKER	40
S18601	JERSEY MELANGE	40
5003	MAC TRUCKER	41

S12608	SNAPBACK TWO-TONE	42
U15602	PRO STYLE	42
S12607	SNAPBACK ORIGINAL	43
S17607	AMERICAN CURVED PEAK	44
S19500	CURVED PEAK FOAM TRUCKER	45
S17601	HORIZON SNAPBACK	46
S15601	SPORT TECH CAP	46
S19602	PONY TRUCKER	47
F21600	CHAMBRAY / SUEDE 6 PANEL CAP	47


OUTDOOR RANGE

6017	THE BARK	51
6027	CAMO HUNTER	52
6052	CAMO VISOR	52
H2000	WIDEBRIM SUN TECH	53
17609	TWO-TONE CAMO	53
17603	WASHED OIL SKIN 6 PANEL	54
17608	PIXEL CAMO	54
C10606	MAX WASH	55
F21500	PIGMENT WASHED 5 PANEL	56
S6080	BOTTLE OPENER CAP	57
S21600	RIPSTOP 6 PANEL	57
PB007	GATOR (PACKED IN PLASTIC)	58
B007	GATOR (PACKED ON A BOARD)	58
H17002	COLLAPSIBLE CRICKETER	59
S6048	SAFARI WIDE BRIM	60
H2100	RIPSTOP BUSH HAT	61
6042	TRACKER CANVAS	62
C10605	SUN STOP	62
H2101	MAX WASH BUCKET HAT	63
21603	CAMO LAZER OIL SKIN CAP	63
F22600	MAX WASH 6 PANEL TRUCKER	64

WORKWEAR RANGE

H15700	BRIM	67
6052	TWILL LUMO VISOR	67
SA6033	SA BUCKET HAT - NO BRAND	68





B001	CUFFED KNITTED BEANIE	69
S6048	LUMO SAFARI WIDE BRIM	69
6038	FADE RESISTANT CAP	70
10111	SWAT CAP	70
S6083	BUMP CAP	71
9008	THE BUMP	71
W22600	SAFETY REFLECTIVE	72

COLD FORCE RANGE

B001	CUFFED KNITTED BEANIE	75
B1701	CUFFED BEANIE	76
B1702	KNITTED SET	76
B005	POLAR FLEECE TASSEL SCARF	77
B004	POLAR FLEECE BEANIE	78
1051	JACQUARD BEANIES CUFF	78
1052	JACQUARD BEANIES SKULL	78
1053	JACQUARD BEANIES SLOUCH	78
VB001	PROMO CUFFED BEANIE	79
B1900	POM POM BEANIE	79
B2200	RIB KNITTED CUFFED BEANIE	80
B2201	FEATHER TOUCH CUFFED BEANIE	80

KIDS RANGE

K17002	KIDS COLLAPSIBLE CRICKETER	83
K6048	KIDDIES WIDE BRIM SAFARI HAT	84
K5038	KIDDIES 5 PANEL FADE RESISTANT	85
K17003	SCHOOL BUCKET HAT	85
K6038	KIDS FADE RESISTANT 6 PANEL CAP	86
KB001	KIDDIES KNITTED BEANIE	86
KB1702	KIDDIES KNITTED SET	87
KSA6033	BUCKET HAT KIDS	87

EXECUTIVE RANGE

16066	IVY	91
6043	EXECUTIVE OTTOMAN	91
I2100	MAX WASHED IVY	92

MOULDED RANGE

H13702	VALUE CUBAN HAT	95
6050	PANAMA HAT	95
6049	TWO-TONE STRAW HAT	96

DISCONTINUED RANGE

V5005	5 PANEL CAP	99
V13602	V STRIPE	100
V6033	BARGAIN BUCKET	100
V6001	SANDWICH BRUSHED COTTON	101
5001	SUPER 5 PANEL COTTON CAP	102
6056	PERFORMER	102
S12601	THE SWAY PEAK	103
P17052	RUSH TECH VISOR	103
S15502	TRI PEAK	104
P18600	BENCHMARK	104
P17000	RUNNER	105
6374	OLYMPIC 6 PANEL	106
S12607	SNAPBACK ORIGINAL	106
17606	SMOOTH 6 PANEL SUEDE	107
S18606	SNAPBACK MESH CURVED PEAK	107
S12608	SNAPBACK TWO-TONE	108
17610	FASHION SUEDE	109
6017	THE BARK	109
C10609	REACTOR	110
B14001	BERET	110
60352T	VISIBILITY	111
SV6038	SECURITY CAP	111
S13502	AFTER GLOW CAP	112
B1700	TWO-TONE SLOUCH SKULL BEANIE	112
VB004	PROMO FLEECE BEANIE	113
B006	POLAR FLEECE GLOVES	113
B005	POLAR FLEECE TASSEL SCARF	114
C10608	COSA NOSTRA	115
S17602	ACTIVE 6 PANEL TRUCKER	115
H13700	ORIGINAL CUBAN HAT	116
H17005	TWO-TONE STRAW MENS FEDORA	116



PU & 3D PU PRINT

PU & 3D PU print allows for highly detailed designs, whether large images or small text, with one or many colour options.

PU Print is achieved when your design is printed onto PU vinyl, then using heat it is pressed onto the headwear.

Place your design on an entire panel (CMT), or use it for small detail prints, to give the impression of a badge.



FLAT EMBROIDERY

Flat embroidery entails stitching your logo and/or design onto the headwear.

This option allows for a vast number of colour variations, with the ability for logos & designs to be easily translated on a variety of different surfaces. We use a high-thread count to ensure that you are left with a smooth and detailed finish.

Flat Embroidery can be combined with several other branding options.

Request a combo of 3D Embroidery, PU Print, Applique, Flocking, Screen Print etc.





3D EMBROIDERY

3D Embroidery is achieved by placing foam under the top stitch, which raises the embroidered design. This results in a premium finish, that is smooth and precise, while adding an extra "pop" to your design.

For extra effect, combine 3D Embroidery with Flat Embroidery or PU Print, or Sublimation resulting in a product with a difference!

Our 100 embroidery heads allow us to achieve more than 12,000 to 15,000 embroideries a day!



APPLIQUES

Appliques incorporate various stitching techniques to provide your finished branding with more texture, resulting in a badge-like appearance.

This versatile method of branding is achieved by using a variety of different stitching techniques, giving your branding unique character.



FLOCKING

Flocking is a unique heat transfer vinyl that gives your design an added dimension, given its raised, soft and textured suede/velvet feel.

From printable to cut-out, Flocking is cost-effective and can be heat transferred onto any headwear of your choice.



SUBLIMATION

Sublimation is achieved when an image is fused into polyester material to give a high-quality and smooth look.

With an unlimited number of colours able to be used, your design can be printed anywhere on a CMT cap, visor and bucket hat, either specific areas or the entire headwear.

You can also sublimation directly onto any headwear stock item that is white and is made up of 100% polyester or has a high content of polyester make up.



SONIC WELD

The **Sonic/3D Weld** is a high-quality soft and rigid material, which gives a 3D appearance. It is an environmentally friendly, non-PVC material with a maximum application of 5 colours.

These imported, highly effective details include: glossy, matte, glitter, gradation, neon colour, pearlized or reflective.

This type of applique can be heat transferred onto headwear and has a glue backing that can be weeded out. Very thin lettering is not advised.



DIGITAL TRANSFER FILM

DTF is a unique printing technology that involves printing designs onto special films for transfer onto caps.

DTF printing is a heat transfer process that has the ability to last as long as traditional silkscreen prints.





PATCHES

An embroidered **patch**, also known as a cloth badge, is a piece of embroidery which is created by using a fabric backing and thread.



LOCAL CMT & CUSTOM IMPORT

With the exchange rate being vulnerable as it is, we have worked really hard to eliminate its influence in your business. To do this, we have invested in a **South Africa CMT**, housed within our Durban head office, allowing us to manufacture locally!

We can deliver a variety of products in no time:

- 220 styles to choose from
- 3.5 million products in stock
- Production line producing 4000 to 5000 caps per day
- CMT Lead times: Sampling 7 days, Fabric and stock 15-20 days, Custom dyed 35-34 days
- Unlimited customisation potential



JACQUARD BEANIES

With the ability to knit any logo, pattern or design into the beanie, the branding options are unlimited.

No **Jacquard Beanie** is too big or too small as we are able to manufacture for kids and adults. Choose between 3 different styles for variety: **Skull, Cuffed or Slouchy.**

You can add tags and embroidery for extra detail!



SCREEN PRINT

The perfect option for bulk orders!

If your design has one or two colours, **Screen printing** is the most cost-effective branding option.

It is perfect alternative to PU Printing or Embroidery if you are on a tight budget.

Screen printing can be placed anywhere on your headwear for an eye-catching product.





DESTINATION **RANGE**

"Destination" Headwear! We can make up bespoke headwear for any Country, City or Location. Our caps are sold blank with the South African flag sublimated (choose your custom embroidery).



SA19500 **SA FLAG TRUCKER**



FABRIC CONSTRUCTION

Sublimated polyester front panel | Weight: 185g | 4 Needle 80/20 polycotton sweatband |
5 Panel structured | Nylon mesh back panels | Poly snapback enclosure |
Pre-curved peak



V6038

PROMO RANGE

Create a favourable impression with affordable headwear you will want for a promotional campaign, showcase your brand to customers new and old. Take your promotions to the next level without breaking the bank.



V5002 5 PANEL PROMO



khaki



black



purple



burgundy



orange



lime



cerise



emerald



yellow



navy



royal



turquoise



red



grey



charcoal



white



bottle



FABRIC CONSTRUCTION

Poly cotton twill (150 x 150) | Weight: 170g | 2 Needle poplin sweatband | 4 Embroidered self-colour eyelets | 5 Panel structured (Cotton Buckram) | Self-fabric velcro closure to accommodate adjustability | Pre-curved peak

V6009 6 PANEL BRUSHED COTTON



khaki



black



purple



burgundy



orange



lime



bottle



emerald



yellow



navy



royal



turquoise



red



grey



white



chocolate



pink



sky



stone



FABRIC CONSTRUCTION

Brushed cotton (72 x 44) | Weight: 265g | 4 Needle stitch poly cotton sweatband |
6 Embroidered self-colour eyelets | 6 Panel structured (Cotton Buckram) |
Self-fabric velcro closure to accommodate adjustability | Pre-curved peak

V6038 VALUE FADE RESISTANT CAP



khaki



black



purple



burgundy



orange



lime



cerise



bottle



yellow



navy



royal



chocolate



red



grey



charcoal



white



grey melange



emerald



turquoise



FABRIC CONSTRUCTION

100% Polyacrylic | 4 Needle stitch polyester sweatband |
6 Embroidered self-colour eyelets | 6 Panel structured (Cotton Buckram) |
Self-fabric velcro closure to accommodate adjustability | Pre-curved peak

V6001 SANDWICH BRUSHED COTTON



black/red



black/white



black/yellow



black/orange



navy/red



navy/white



royal/white



white/black



red/black



red/white



khaki/black



yellow/black



FABRIC CONSTRUCTION

Brushed cotton (72 x 44) | Weight: 265g | 4 Needle stitch poly cotton sweatband |
6 Embroidered self-colour eyelets | 6 Panel structured (Cotton Buckram) |
Self-fabric velcro closure to accommodate adjustability | Pre-curved sandwich peak

V5038 5 PANEL FADE RESISTANT



khaki



black



red



orange



lime



royal



emerald



bottle



navy



grey



grey melange



burgundy



charcoal



yellow



white



FABRIC CONSTRUCTION

Polyacrylic | 5 Panel cap | Cotton under peak with 4 rows of stitching | Cotton Buckram |
Self-colour poplin sweatband | Velcro closure to match back of cap |
Embroidered self-colour eyelets | Pre-curved peak

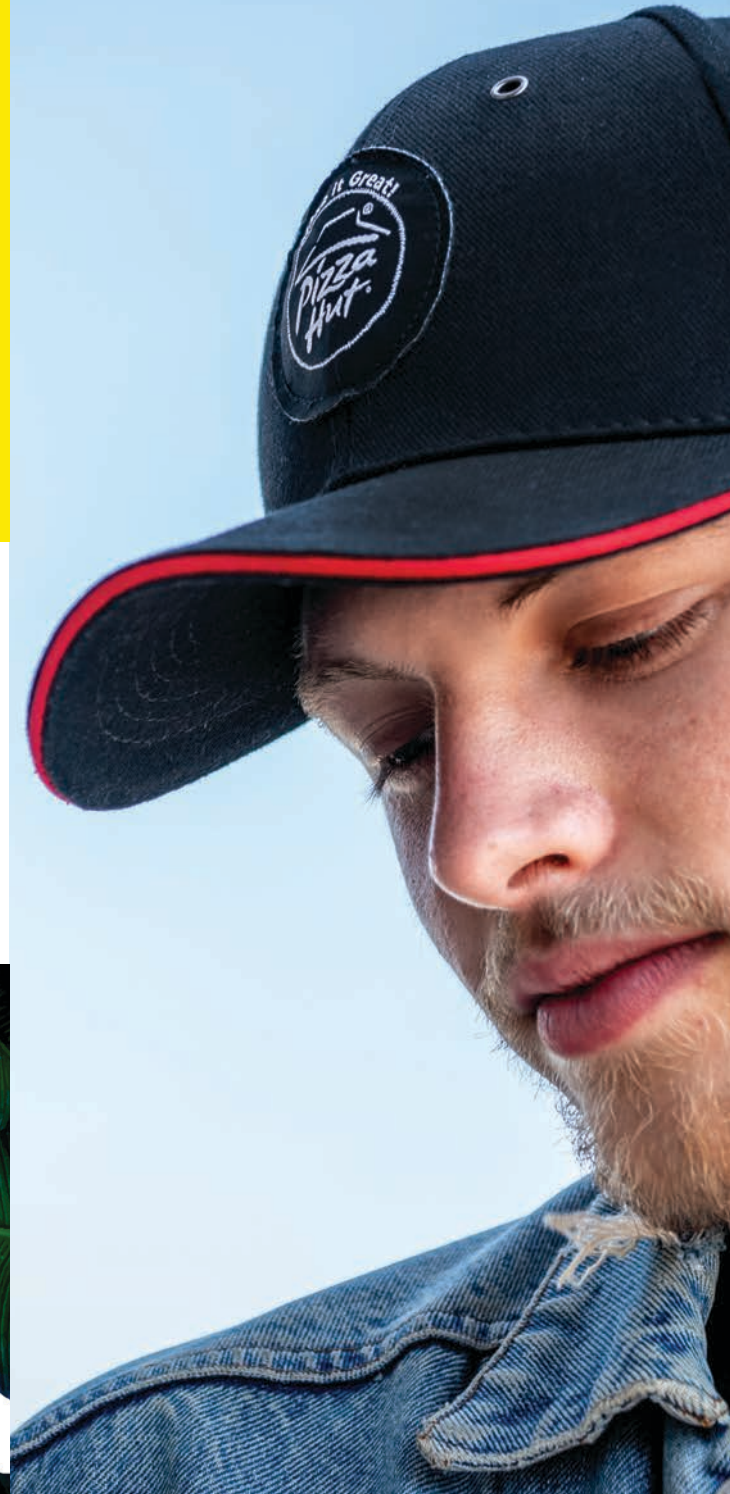




M6001

SUPERIOR RANGE

Treat yourself and shop our selection of high-quality headwear from our superior range consisting of only the best quality with a flawless fit and supreme comfort.



5001 SUPER 5 PANEL COTTON CAP



FABRIC CONSTRUCTION

Cotton twill (74 x 44) | Weight: 270g | 4 Needle stitch twill sweatband | 6 Embroidered self-colour eyelets | 5 Panel structured (Nylon Buckram) | Self-fabric velcro closure to accommodate adjustability | Pre-curved peak

6009 RETAIL 6 PANEL CAP



FABRIC CONSTRUCTION

Heavy brushed cotton twill (74 x 44) | Weight: 270g | 4 Needle stitch twill sweatband | 6 Embroidered self-colour eyelets | 6 Panel structured (Nylon Buckram) | Self-fabric velcro closure to accommodate adjustability | Pre-curved peak



M6001 METAL SANDWICH PEAK



black/white



red/white



navy/white



black/red



royal/white



FABRIC CONSTRUCTION

Brushed cotton twill (72 x 44) | Weight: 270g | 4 Needle stitch poly cotton sweatband |
6 Metal eyelets | 6 Panel structured (Nylon Buckram) |
Self-fabric closure with gun metal buckle and tuck in return | Pre-curved peak



S15502



PERFORMANCE **RANGE**

Take your performance to the next level with our headwear. Whether you're hitting the road for a run or biking along the mountain, we can promise comfort while you sweat it out.



P19600 **ENDURANCE**



black/black



cerise



grey



olive



white/black



navy



FABRIC CONSTRUCTION

Polyester microfibre | 4 Needle stitch poplin sweatband |
Laser punched fabric for breathability | Black strap and plastic clip closure to accommodate adjustability |
Pre-curved peak

P19700 **MARATHON**



FABRIC CONSTRUCTION

Polyester microfibre/poly mesh | Weight: 120g | Poplin sweatband |
Reflective panel detail | Unstructured | Tonal mesh detail |
Black strap and plastic clip closure to accommodate adjustability | Pre-curved peak



black/reflective



cerise/reflective



navy/reflective



white/reflective



red/reflective

P17002 **LASER AIRTECH**



FABRIC CONSTRUCTION

Laser punched polyester microfibre peachskin fabric | Grey soft mesh polyester sweatband | 2 Embroidered self-colour eyelets | 6 Panel cap (Fused Buckram) | Self-colour stitching | Elasticated strap and plastic clip closure | Grey inner tape | Pre-curved peak

P21052 **SUMMIT VISOR**



FABRIC CONSTRUCTION

100% polyester cationic fabric, under peak in 100% cotton | Fabric weight: 165gsm | T/C quality sweatband with four rows of stitches | Sun visor style with self-fabric binding on top with plastic folded buckle and Velcro closure



6052 TWILL VISOR



black



khaki



brown camo



camo thorn



green camo



camo oak



camo pine



vintage camo



sky



bottle



navy



yellow



orange



limo yellow



limo orange



pink



red



royal



white



turquoise



colbalt



FABRIC CONSTRUCTION

80/20 Poly cotton (21*21) 108 x 58 |

4 Needle stitch poly cotton sweatband | Self-fabric velcro closure to accommodate adjustability | Pre-curved peak

6056 PERFORMER



lumo orange



black/grey/white



lumo yellow



navy/grey/white



royal/grey/white



white/grey/black



FABRIC CONSTRUCTION

Poly microfibre/poly mesh | 4 Needle stitch poplin sweatband | Reflective panel detail |
6 Panel unstructured | Tonal mesh detail |
Self-fabric velcro closure to accommodate adjustability | Pre-curved peak

S15052 THE ATHLETE



red/black



orange/black



lime/black



black/black



navy/black



pink/black



FABRIC CONSTRUCTION

Airtex fabric | Terry towelling inner band |
Elasticated back | Can be sublimated |
Pre-curved peak

P17040 MULTI-SPORT MESH (PERFORMANCE RANGE)



red/white



navy/white



stone/black



lime/black



black/black



yellow/black



white/black



FABRIC CONSTRUCTION

100% Polyester small square grid fabric (155g - 165g) | 100% Polyester mesh (150g - 160g) | 7 Panel unstructured cap | Black inner tape | Black underpeak | 4 Needle stitched sweatband | Black strap and plastic clip closure | Pre-curved peak | 3cm Binded loop for coiled cable attachment to cap and garment | Coiled cable attachment | *Note: Coiled cable attachment sold separately





S18601

FASHION RANGE

Complete your look with headwear from our fashion range, perfect for those fashionistas with a particular style and flair. You'll find our headwear is not only stylish but luxurious too.



S19601 **SUMMIT**



forest green



heather grey



dusty pink



red



turquoise



navy



charcoal



FABRIC CONSTRUCTION

100% Polyester / 100% cotton underpeak | 80/20 Poly cotton charcoal sweatband |
6 Self-coloured embroidered eyelets | 6 Panel structured (Oxford Buckram) |
Pre-curved peak | Self-fabric with black buckle closure

F21501 5 PANEL SUMMER TRUCKER



charcoal



dusty pink



forest green



red



navy



heather grey



turquoise



FABRIC CONSTRUCTION

100% Polyester cationic fabric for front panel and peak, back in 100% polyester nylon mesh |
Weight: 65g | T/C Quality sweatband, with 4 rows of stitches | Plastic snap closure | All colours with black
cotton fabric underpeak and black mesh on back four panel

6070 FASHION DENIM



FABRIC CONSTRUCTION

10 Ounce raw denim | 4 Needle stitch cotton twill sweatband |
6 Panel unstructured | PU Leather strap and metal buckle closure |
Pre-curved peak



light denim



raw denim



black

C10603 **EARTH LIFE**



black/khaki



black/red



black/white



khaki/black



khaki/navy



navy/khaki



navy/white



red/white



royal/white



FABRIC CONSTRUCTION

Ultra soft superior brushed 100% cotton twill (16 x 10) | Velcro backstrap |
4 Needle stitch twill sweatband | Contrast embroidered eyelets |
Pre-curved peak with contrast sandwich | Unstructured

C10500 **JERSEY TRUCKER**



FABRIC CONSTRUCTION

Jersey knit fabric and polyester mesh | 4 Needle stitch twill sweatband |
5 Panel structured (Nylon Buckram) | Snapback closure |
Pre-curved peak

S18601 **JERSEY MELANGE**



FABRIC CONSTRUCTION

92% Polyester, 8% spandex | Weight: 180g | 4 Needle stitch twill sweatband |
6 Panel structured (Nylon Buckram) | Self-fabric velcro closure to accommodate adjustability |
Pre-curved peak



5003 MAC TRUCKER



red/white



red/black



black/white



royal/white



navy/white



white/black



camo brown



camo green



camo pine



vintage camo



camo oak



camo thorn



black/black



FABRIC CONSTRUCTION

Cotton twill front panel (108 x 58) | Weight: 185g |
4 Needle 80/20 poly cotton sweatband | 5 Panel structured | Nylon mesh back panels |
Poly snapback closure | Pre-curved peak

S12608 **SNAPBACK TWO-TONE**



grey melange/black

grey/black

grey melange/
charcoal melange



white/black

black/red



FABRIC CONSTRUCTION

100% Acrylic (10 x 10) 74 x 44 | 4 Needle stitch cotton twill sweatband |
6 Embroidered contrast eyelets | 6 Panel structured (Nylon Buckram) |
Poly snapback closure | Flat contrast peak with sticker

U15602 **PRO STYLE**



FABRIC CONSTRUCTION

Spandex cotton twill (2% Spandex, 98% Cotton) | Elasticated sweatband with Jacquard 'U-Flex' branding |
6 Panel structured cap (Canadian Buckram) | 6 Embroidered self-colour eyelets |
Pre-curved peak | One size fits most



black

khaki

navy

red

royal

white

S12607 SNAPBACK ORIGINAL



red



black



cerise



heather grey



white



bottle



charcoal melange



navy



royal



grey melange



charcoal



FABRIC CONSTRUCTION

100% Acrylic (10 x 10) 74 x 44 | 4 Needle stitch cotton twill sweatband |
6 Embroidered self-colour eyelets | 6 Panel structured (Promo Buckram) | Poly snapback closure |
Flat peak with sticker | *Available with matching or contrast colour snapback

S17607 AMERICAN CURVED PEAK



charcoal melange



grey melange



black



royal



bottle



navy



heather grey



red



white



burgundy



FABRIC CONSTRUCTION

100% Acrylic (10 x 10) 74 x 44 | 4 Needle stitch cotton twill sweatband |
6 Embroidered self-colour eyelets | 6 Panel structured (Promo Buckram) |
Poly snapback closure | Pre-curved peak with sticker

S19500 CURVED PEAK FOAM TRUCKER



black/black



white/black



burgundy/burgundy



navy/navy



white/navy



white/cerise



red/red



white/red



royal/royal



white/royal



white/sky



white/white



white/grey



white/burgundy



sky/sky



FABRIC CONSTRUCTION

100% Polyester / Soft mesh / Foam | 4 Needle stitch poly cotton sweatband |
5 Panel (Unstructured) | Snapback closure |
Pre-curved peak

S17601 HORIZON SNAPBACK



black



grey melange



navy



red



FABRIC CONSTRUCTION

100% Acrylic | 4 Needle stitch cotton twill sweatband |
4 Embroidered self-colour eyelets | 6 Panel structured cap |
Poly snapback closure | Flat peak with sticker

S15601 SPORT TECH CAP



FABRIC CONSTRUCTION

Poly birdseye | 6 Panel structured cap |
6 Embroidered self-colour eyelets | Adjustable velcro strap closure |
Pre-curved peak with contrast under peak | Reflective sandwich



red



navy



lime



black



white



khaki

S19602 PONY TRUCKER



black



grey melange



pink



FABRIC CONSTRUCTION

Poly cotton / Soft mesh | Poly cotton sweatband | 6 Self-coloured embroidered eyelets |
6 Panel structured with ponytail slot | Pre-curved peak |
Adjustable poly snap closure

F21600 CHAMBRAY / SUEDE 6 PANEL CAP



grey/tan



navy/tan



charcoal/tan

FABRIC CONSTRUCTION

Fabric: 70% cotton (Chambray part), 30% polyester (Suede part) | Fabric weight: 220g |
Product weight: 75g | Sweatband: black cotton twill sweatband with four sewing stitches |
Details: 6 panel baseball cap, with brass buckle

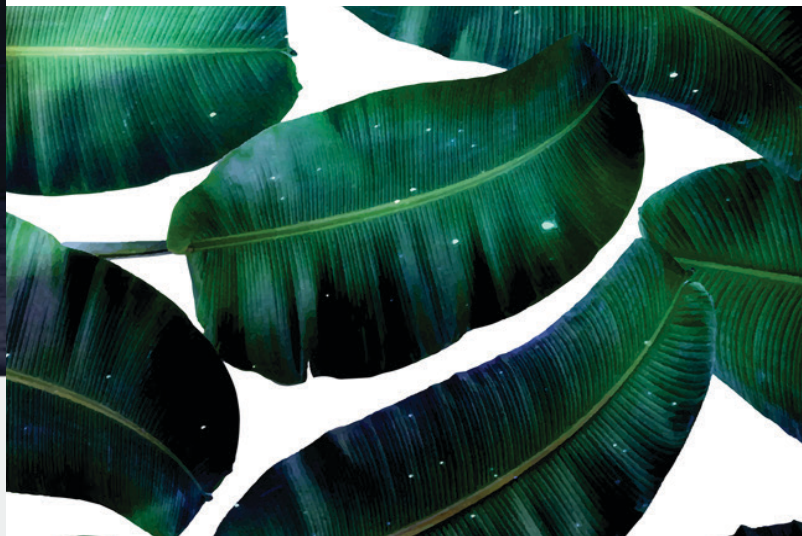




6027

OUTDOOR **RANGE**

This range is the one for those who enjoy the outdoors. Take our headwear on a hike and never regret it with its ideal fit while you take on nature.



6017 THE BARK



black



grey



khaki



navy



olive



stone



camo green



desert camo



snow camo



FABRIC CONSTRUCTION

Enzyme wash chino twill | Weight: 260g
4 Needle stitch twill sweatband | 6 Embroidered self-colour eyelets
6 Panel unstructured | Self-fabric back strap with metal buckle and tuck in return

6027 CAMO HUNTER



camo brown



camo green



camo leaf



camo pine



camo thorn



vintage camo



camo oak



6052 CAMO VISOR



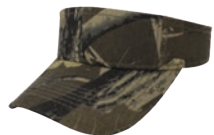
camo brown



camo green



camo pine



camo thorn



vintage camo



camo oak



FABRIC CONSTRUCTION

Camo printed poly cotton | Weight: 185g |
Self-fabric velcro strap | 6 Self-colour eyelets
Pre-curved peak | Velcro back strap

H2000 **WIDEBRIM SUN TECH**



olive

silver

white



FABRIC CONSTRUCTION

100% Polyester fabric | Polyester mesh |
Unstructured crown | Self-colour embroidered eyelets |
Self-colour band | Contrast underpeak

17609 **TWO-TONE CAMO**



FABRIC CONSTRUCTION

Screen printed camo plastisol print | Black colour 4 needle stitched sweatband |
6 Panel structured (Fused Oxford Buckram) | 6 Embroidered self-colour eyelets |
Self-fabric pull and silver buckle closure | Pre-curved peak

17603 WASHED OIL SKIN 6 PANEL



charcoal



camo brown



black



brown



camo brown/brown



FABRIC CONSTRUCTION

Washed oilskin | Loose nylon mesh flap | 6 panel with self-colour stitching |
6 Embroidered self-colour eyelets | Self-fabric pull and silver buckle closure |
Pre-curved peak



navy



camo green



olive



rust



camo green/olive

17608 PIXEL CAMO



FABRIC CONSTRUCTION

Printed camo cotton twill | 6 Panel baseball cap | Embroidered self-coloured eyelets | Self-fabric pull and
silver buckle closure | Fused Oxford Buckram | Black colour 4 needle stitched sweatband |
Black colour inner tape | Pre-curved peak



brown



green



charcoal



orange



pink

C10606 **MAX WASH**



grey



black



chocolate



maroon



mustard



navy



orange



pink marshmallow



red



rust



olive



khaki



aqua blue



FABRIC CONSTRUCTION

Washed pigment dyed cotton twill | 4 Needle stitch twill sweatband |
6 Embroidered self-colour eyelets | 6 Panel unstructured |
Self-fabric buckle closure to accommodate adjustability | Pre-curved peak

F21500 PIGMENT WASHED 5 PANEL



mustard



olive



grey



black



royal



maroon



pink



orange



navy



FABRIC CONSTRUCTION

Fabric: 100% washed cotton twill | Fabric weight: 280g |
Product weight: 185g | Sweatband: 80/20 cotton twill sweatband, with four rows stitches |
Details: 5 Panel cap with Sunday buckle enclosure with self-fabric strap and silver metal D-loop

S6080 BOTTLE OPENER CAP



navy/white



khaki/chocolate



black/red



red/black



FABRIC CONSTRUCTION

Brushed cotton twill | Weight: 270g | 4 Needle stitch twill sweatband |
 6 Embroidered self-colour eyelets | Structured |
 Self-fabric velcro strap | Pre-curved peak with bottle opener | Contrast stitching
 * The bottle opener can be added to any cap

S21600 RIPSTOP 6 PANEL



FABRIC CONSTRUCTION

100% Cotton ripstop | Fabric weight: 200g per square meter | Weight: 80g
 100% Cotton twill sweatband with 4 rows of stitching | Sunday fold buckle |
 All colors with charcoal ripstop fabric on under brim



navy



charcoal



stone



black



cerise



blue



grey



olive

PB007 GATOR (PACKED IN PLASTIC)



custom



custom



custom



custom



FABRIC CONSTRUCTION

Polyester blend with 8% spandex | Size: 50cm x 25cm | Packed in plastic |
Sublimate any design onto white multi-functional headwear
NOTE: Colours available on request

B007 GATOR (PACKED ON A BOARD)



FABRIC CONSTRUCTION

Polyester blend with 8% spandex | Size: 50cm x 25cm | Packed with board and plastic |
Sublimate any design onto white multi-functional headwear
NOTE: Colours available on request



custom



white

H17002 COLLAPSIBLE CRICKETER



royal



black



navy



orange



red



bottle



white/bottle



white



khaki



FABRIC CONSTRUCTION

65/35 Poly twill | Weight: 200g | 80/20 Poly cotton sweatband | 4 Embroidered eyelets | Sizes: small - 56cm, medium - 58cm, large - 60cm | Fade resistant | Printable area - 90mm x 50mm
*Refer to kids range for kiddies sizing

S6048 SAFARI WIDE BRIM



black



navy



chocolate



khaki



royal



olive



camo green



camo brown



red



lumo orange



lumo yellow



stone



charcoal



white



FABRIC CONSTRUCTION

65/35 Poly cotton twill | Cord with slide toggle | Brass eyelets and studs | 4 Needle 80/20 sweatband |
Printable area 90mm x 50mm | Sizes: small - 56cm, medium - 58cm, large - 60cm
*Refer to kids range for kiddies sizing

H2100 RIPSTOP BUSH HAT



black



camo brown



charcoal



grey



green camo



olive



khaki



mustard



navy



FABRIC CONSTRUCTION

100% Cotton ripstop | Fabric weight: 200 per square meter | Weight: 105g |
Fully lined inner style | Black metal eyelet | Elastic string and toggle on hat band (to adjust hat size) |
Black string and toggle under brim

6042 TRACKER CANVAS



charcoal



olive



white



pink



FABRIC CONSTRUCTION

Baby canvas | 4 Needle stitch cotton twill sweatband | 6 Panel unstructured |
Pre-curved peak | 6 Embroidered self-colour eyelets |
Self-fabric back strap with metal buckle and tuck in return

C10605 SUN STOP



FABRIC CONSTRUCTION

Fabric UV protection superior cotton twill | 4 Needle stitch cotton twill sweatband |
Contrast embroidered eyelets | 6 Panel unstructured |
Self-fabric velcro closure to accommodate adjustability | Pre-curved peak



grey/black



khaki/black



red/white



navy/white



red/white

H2101 MAX WASH BUCKET HAT



FABRIC CONSTRUCTION

Fabric: pigment dyed cotton | Fabric weight: +/- 290gsm
 Sweatband: matching color cotton twill with four sewing stitches |
 Details: washed baseball cap, with self-fabric sandwich, back with black brass buckle

21603 CAMO LAZER OIL SKIN CAP



FABRIC CONSTRUCTION

Fabric: 100% cotton | Fabric weight: 285g per square meter
 Product weight: 85g | Sweatband: matching color cotton twill sweatband with four sewing stitches |
 Details: washed baseball cap, with self-fabric sandwich, back with black brass buckle



F22600 MAX WASH 6 PANEL TRUCKER



black



blue



brown



grey



mustard



navy



pink



red



rust



stone



olive



orange



FABRIC CONSTRUCTION

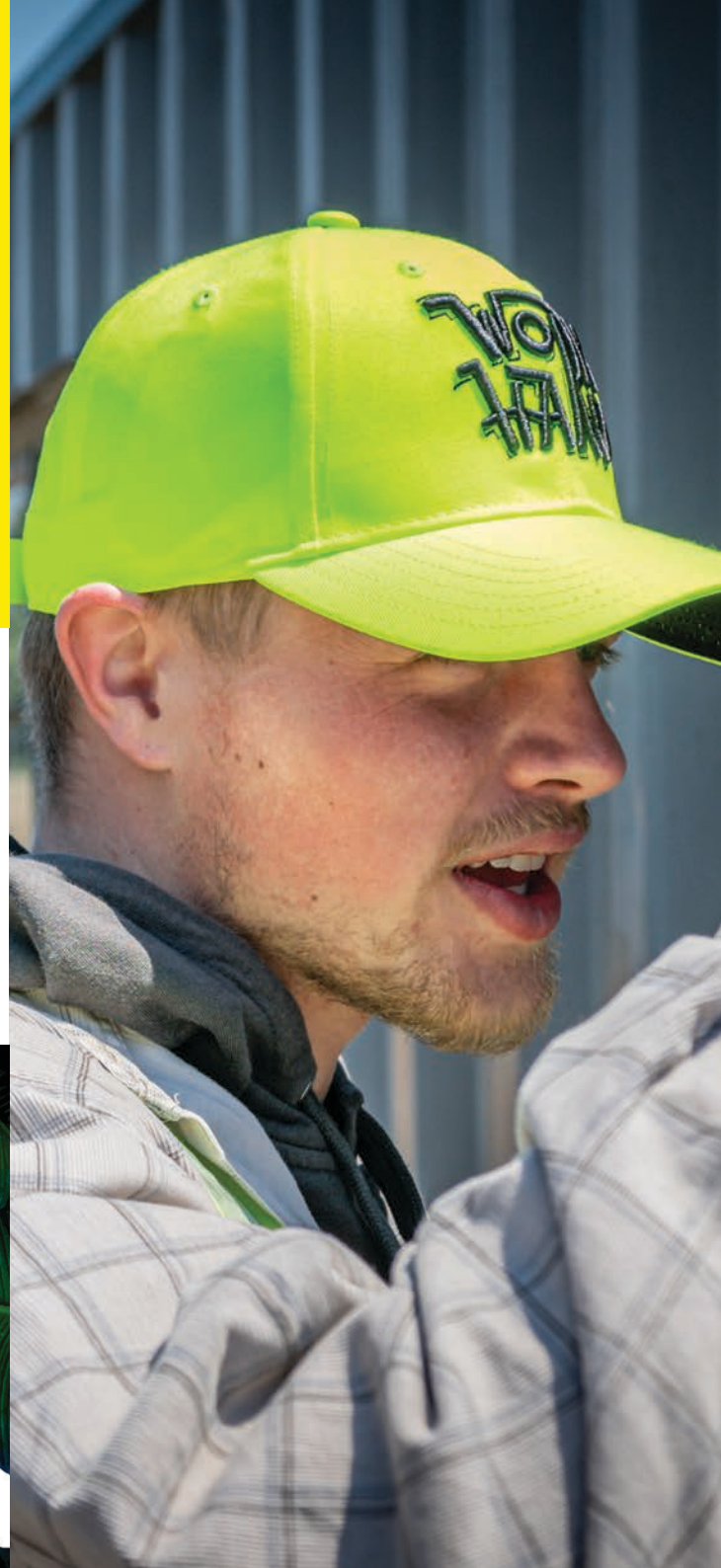
Fabric quality: 100% pigment dyed cotton (front panel and peak) | 100% Polyester (back four panel) |
Fabric weight: 280gsm cotton front | Soft feeling mesh back panel | Product weight: 75g |
Sweatband: khaki cotton twill sweatband, with four sewing stitches | Plastic snap back closure



C10609

WORKWEAR **RANGE**

Whether it's needed for safety or to make sure you stand out on-site, our workwear range is high-quality and has high visibility.



H15700 **BRIM**



neon yellow/black



neon orange/black



FABRIC CONSTRUCTION

100% Polyester | Fits onto a hard hat | Sun protective back flap |
Hanging loop | Cap fitting pocket underbrim |
Contrast black underbrim

6052 **TWILL LUMO VISOR**



neon yellow



neon orange

FABRIC CONSTRUCTION

100% Polyester | 4 Needle stitch twill sweatband |
Reflective sandwich |
Self-fabric velcro closure | Black underpeak

SA6033 SA BUCKET HAT - NO BRAND



khaki



black



orange



red



olive



bottle



yellow



navy



royal



white



burgundy



FABRIC CONSTRUCTION

80/20 Poly cotton twill | Weight: 195g | Self-colour underbrim |
4 Self-colour embroidered eyelets | One size fits most | Printable area: 100mm x 55mm |
No band | Available with band (6033) *check with sales rep

B001 CUFFED KNITTED BEANIE



lumo yellow



lumo orange



FABRIC CONSTRUCTION

100% Acrylic knit |
Fold up |
One size fits most

S6048 LUMO SAFARI WIDE BRIM



lumo orange



lumo yellow

FABRIC CONSTRUCTION

100% Polyester | 4 Needle stitch twill sweatband | Brass eyelets and studs | Cord with slide toggle |
Sizes: Small - 56cm, medium - 58cm, large - 60cm |
Printable area: 90mm x 50mm | Floats on water

6038 FADE RESISTANT CAP



black



navy



bottle



FABRIC CONSTRUCTION

100% Acrylic | 4 Needle stitch twill sweatband |
Embroidered self-colour eyelets | 6 Panel structured (Nylon Buckram) |
Self-fabric velcro strap to accommodate adjustability | Pre-curved peak

10111 SWAT CAP



FABRIC CONSTRUCTION

80/20 Poly cotton | Weight: 260g | Fade resistant | Poly cotton sweatband |
Security wear | 2 Panel structured cap (Promo Buckram) |
Self-fabric velcro closure to accommodate adjustability | Curved peak



black



bottle



charcoal



navy



grey

S6083 **BUMP CAP**



black



charcoal



grey



navy



royal



red



FABRIC CONSTRUCTION

100% Acrylic | 4 Needle stitch twill sweatband | 6 Embroidered self-colour eyelets |
6 Panel structured (Nylon Buckram) | Self-fabric velcro strap to accommodate adjustability |
Pre-curved short peak

9008 **THE BUMP**



bump

FABRIC CONSTRUCTION

Not included with cap | Sold separately |
Not SABS approved |
*Warning: This is not an industrial safety helmet

W22600 **SAFETY REFLECTIVE**



yellow



orange



FABRIC CONSTRUCTION

100% Polyester 200gsm lumu upper peak and 6 panel crown | 100% Cotton 180gsm under peak | Bonding fabric at back | Weight: 75g | 100% Cotton twill (108*58 cotton) sweatband, with four rows stitches | Reflective sandwich, upper peak, both side panel and back panel with reflective stripe



B1701

COLD FORCE **RANGE**

When you need to keep warm during winter, our cold force range is there for you. Stylish, high-quality and cosy, we have many options within this range.



B001 CUFFED KNITTED BEANIE



khaki



black



chocolate



burgundy



orange



lumo orange



lime



bottle



lumo yellow



navy



white



royal



yellow



grey melange



red



light grey



dusty pink



fuchsia pink



sky



charcoal



FABRIC CONSTRUCTION

100% Acrylic knit |
Fold up |
One size fits al

B1701 CUFFED BEANIE



black



burgundy



charcoal



grey



navy



bottle



FABRIC CONSTRUCTION

Acrylic knit beanie |

One size fits all |

*Note: Branded printable label is separate

B1702 KNITTED SET



FABRIC CONSTRUCTION

100% Acrylic knit | Fold up beanie |
Beanie weight: 65g - 70g | Scarf weight: 280g |
Sold as a set | One size fits most



black



bottle



burgundy



charcoal



navy



red



royal

B005 POLAR FLEECE TASSEL SCARF



black



bottle



navy



royal



red



FABRIC CONSTRUCTION

Polar fleece scarf with fringe |
Size: 160cm x 20cm |
Weight: 220g

B004 POLAR FLEECE BEANIE



black



bottle



navy



royal



khaki



yellow



red



FABRIC CONSTRUCTION

Polar fleece | Available in 4 panel and 6 panel |
One size fits most |
Weight: 220g

JACQUARD BEANIES



1051 **CUFF**



1052 **SKULL**



1053 **SLOUCH**

FABRIC CONSTRUCTION

100% Acrylic knit | Available sizes: Kids, ladies, mens |
Weight: 65g -70g |
*Fully customisable to your needs

VB001 **PROMO CUFFED BEANIE**



black



bottle



navy



red



royal



FABRIC CONSTRUCTION

Knitted |
One size fits most | Weight: 50g
**Available in BB001 | Weight: 40 - 45g*

B1900 **POM POM BEANIE**



FABRIC CONSTRUCTION

100% Acrylic knit |
One size fits most |
Weight: 75g - 80g



black



heather grey



heather charcoal



navy



red



royal

B2200 RIB KNITTED CUFFED BEANIE



black

grey

khaki

red

charcoal



mustard

navy

olive

white

grey melange



FABRIC CONSTRUCTION

100% Acrylic |
Weight: 75-80g | Cuffed Beanie |
Leather clip label on cuff

B2201 FEATHER TOUCH CUFFED BEANIE



FABRIC CONSTRUCTION

54% Rayon, 30% polyester
and 16% nylon | Weight: 75-80g |
Cuffed beanie



black

charcoal

navy

sage



brown

grey

white



K6048

KIDS **RANGE**

Treat your kids to comfort and style while protecting them from the sun. Let your kids express themselves and pick their headwear.



K17002 KIDS COLLAPSIBLE CRICKETER



khaki



black



bottle



orange



navy



royal



red



white



white/bottle



FABRIC CONSTRUCTION

65/35 Poly twill | 80/20 Poly cotton sweatband |
Sizes: Toddlers (S/M) - 52cm, junior primary (L/XL) - 54cm | Fade resistant |
Printable area: 90mm x 50mm

K6048 KIDDIES WIDE BRIM SAFARI HAT



khaki



olive



chocolate



stone



navy



royal



red



camo brown



camo green



FABRIC CONSTRUCTION

65/35 Poly twill | Brass eyelets and studs | Cord with slide toggle |
Sizes: S/M - 52cm, L/XL - 54cm |
Printable area: 90mm x 50mm

K5038 KIDDIES 5 PANEL FADE RESISTANT



black



bottle



burgundy



red



royal



navy



FABRIC CONSTRUCTION

100% Acrylic | 4 Embroidered eyelets | Pre-curved peak |
Self-fabric velcro strap | Size: 54cm x 55cm | 2 Needle stitch poly cotton sweatband |
5 Panel structured (Promo Buckram)

K17003 SCHOOL BUCKET HAT



FABRIC CONSTRUCTION

65/35 Poly cotton twill | Self-colour underbrim |
4 Brass metal eyelet | Sizes: Small - 52cm, medium - 54cm, large - 56cm |
Printable area: 100mm x 55mm | White lining on inside centre crown



burgundy



bottle



khaki



black



navy



royal

K6038 KIDS FADE RESISTANT 6 PANEL CAP



black



bottle



red



navy



royal



burgundy



FABRIC CONSTRUCTION

100% Polyacrylic | Weight: 270g | 4 Needle poly cotton sweatband | 6 Embroidered self-colour eyelets |
6 Panel structured (Nylon Buckram) | Self-fabric velcro closure to accomodate adjustability |
Pre-curved peak

KB001 KIDDIES KNITTED BEANIE



FABRIC CONSTRUCTION

Acrylic knit |
Fold up beanie |
One size fits most



black



navy



bottle



red



pink

KB1702 KIDDIES KNITTED SET



black



bottle



burgundy



charcoal



navy



royal



red



FABRIC CONSTRUCTION

100% Acrylic knit | Fold up beanie | Beanie weight: 65g - 70g |
 Scarf weight: 280g | Sold as a set |
 One size fits most

KSA6033 BUCKET HAT KIDS



burgundy



bottle



red



white



black



navy



royal

FABRIC CONSTRUCTION

80/20 Poly cotton twill | Weight: 195g | Self-colour underbrim |
 4 Self-colour embroidered eyelets | One size fits most | Printable area: 100mm x 55mm |
 No band | Available with band (6033) *check with sales rep





16066

EXECUTIVE **RANGE**

The perfect accompaniment to any business meeting, whether it's on the golf course or in the boardroom, this range is what you need to impress and leave your mark.



16066 **IVY**



FABRIC CONSTRUCTION

65/35 Poly cotton / Denim: 80% polyester 20% viscose |
4 Needle stitching | Self-fabric inner sweatband | Pre-curved peak |
Size: 58cm | PU leather strap and metal buckle closure

6043 **EXECUTIVE OTTOMAN**



FABRIC CONSTRUCTION

Mini ottoman | 4 Needle stitch poplin sweatband with moisture control |
Embroidered self-colour eyelets | 6 Panel unstructured |
Self-fabric closure with D-loop metal buckle | Pre-curved peak



I2100 **MAX WASHED IVY**



maroon



mustard



navy



orange



black



khaki



olive



chocolate



FABRIC CONSTRUCTION

100% Pigment dyed cotton | Weight: 280g |
Self-fabric sweatband with four sewing stitches |
Washed ivy hat with elastic closed back



H13700

MOULDED **RANGE**

This range is great for those rare moments of relaxation. A guaranteed flawless fit and very fashionable, the moulded range is excellent for the holidays.



H13702 **VALUE CUBAN HAT**



FABRIC CONSTRUCTION

Paper straw |
Sizes: 57cm x 59cm |
Print on band

6050 **PANAMA HAT**



FABRIC CONSTRUCTION

Paper straw | Print or embroidery on removable band |
Flat band |
One size fits most



black

bottle

navy



khaki

red

6049 TWO-TONE STRAW HAT



black



bottle



navy



khaki



FABRIC CONSTRUCTION

Straw |
One size fits all |
Print or embroidery on removable pleated band



DISCONTINUED **RANGE**

Headwear that we have stock of but has since then been discontinued and no longer in production.



V5005 **5 PANEL CAP** (PROMO RANGE)



bottle



navy



royal



khaki



FABRIC CONSTRUCTION

100% Cotton (24 x 24) | Weight: 108g | 2 Needle TC sweatband |
4 Embroidered self-colour eyelets | Self-fabric velcro closure to accommodate adjustability |
Pre-curved peak | Lightweight cotton buckram

V13602 **V STRIPE** (PROMO RANGE)



FABRIC CONSTRUCTION

Brushed cotton | 4 Needle stitch poplin sweatband | 6 Embroidered contrast eyelets |
6 Panel structured (Cotton Buckram) | Velcro closure with
loop for adjustability | Pre-curved peak | Embroidered detail on peak | Red/white only

V6033 **BARGAIN BUCKET** (PROMO RANGE)



FABRIC CONSTRUCTION

Cotton (24 x 24) |
Weight: 108g |
2 Needle polyester sweatband



white



yellow

V6001 **SANDWICH BRUSHED COTTON** (PROMO RANGE)



grey/white



lime/black



purple/white



black/pink



bottle/yellow



charcoal/black



stone/navy



orange/black



FABRIC CONSTRUCTION

Brushed cotton (72 x 44) | Weight: 265g | 4 Needle stitch poly cotton sweatband |
6 Embroidered self-colour eyelets | 6 Panel structured (Cotton Buckram) |
Self-fabric velcro closure to accommodate adjustability | Pre-curved sandwich peak

5001 **SUPER 5 PANEL COTTON CAP** (SUPERIOR RANGE)



sky



yellow



bottle



lime



emerald



orange



FABRIC CONSTRUCTION

Cotton twill (74 x 44) | Weight: 270g | 4 Needle stitch twill sweatband | 6 Embroidered self-colour eyelets | 5 Panel structured (Nylon Buckram) | Self-fabric velcro closure to accommodate adjustability | Pre-curved peak

6056 **PERFORMER** (PERFORMANCE RANGE)



FABRIC CONSTRUCTION

Poly microfibre/poly mesh | 4 Needle stitch poplin sweatband | Reflective panel detail | 6 Panel unstructured | Tonal mesh detail | Self-fabric velcro closure to accommodate adjustability | Pre-curved peak



black/grey/yellow



red/grey/black



red/grey/white



yellow/grey/black



orange/grey/black

S12601 **THE SWAY PEAK** (PERFORMANCE RANGE)



black/white/lime



black/white/yellow



black/white/red



FABRIC CONSTRUCTION

Chino cotton twill | Weight: 260g | 4 Needle stitch cotton sweatband |
Self-fabric velcro closure | Pre-curved peak | Piping detail |
Contrast panel detail on peak

P17052 **RUSH TECH VISOR** (PERFORMANCE RANGE)



FABRIC CONSTRUCTION

100% Polyester with laser punched polyester side panels |
4 Rows of self-colour stitching | Contrast sandwich brim |
Contrast laser punched side panels | Stretch elastic band closure | Red only

S15502 **TRI PEAK** (PERFORMANCE RANGE)



FABRIC CONSTRUCTION

Microfibre reflective piping | 4 Row stitched sweatband |
Metal eyelets | Breathable mesh inset |
Fabric strap with plastic tuck in | Grey reflective underpeak

P18600 **BENCHMARK** (PERFORMANCE RANGE)



FABRIC CONSTRUCTION

Fabric with contrast stitch detail | 100% Polyester sweatband | 6 Panel cap |
Structured (Black Buckram) | Self-fabric buckle closure |
Pre-curved peak | Grey peak detail



black

stone

white

P17000 **RUNNER** (PERFORMANCE RANGE)



black/black



navy/white



FABRIC CONSTRUCTION

Polyester microfibre peachskin fabric and 6 soft mesh panels | Black ribbed strap and plastic clip closure | Pre-curved peak | Self-colour stitching | Reflective piping on soft mesh panels | Black inner tape | 3cm Binded loop for coiled cable attachment to cap and garment

6374 **OLYMPIC 6 PANEL** (PERFORMANCE RANGE)



black/orange



black/red



navy/white



sky/navy



royal/white



khaki/black



black/white



FABRIC CONSTRUCTION

Microfibre peachskin | 4 Needle stitch poplin sweatband |
6 Panel unstructured | Contrast mesh on panels |
Self-fabric velcro closure to accommodate adjustability | Pre-curved peak

S12607 **SNAPBACK ORIGINAL** (FASHION RANGE)



FABRIC CONSTRUCTION

100% Acrylic (10 x 10) 74 x 44 | 4 Needle stitch cotton twill sweatband |
6 Embroidered self-colour eyelets | 6 Panel structured (Promo Buckram) | Poly snapback closure |
Flat peak with sticker | *Available with matching or contrast colour snapback



emerald



stone



yellow



purple

17606 **SMOOTH 6 PANEL SUEDE** (FASHION RANGE)



black



bottle



grey



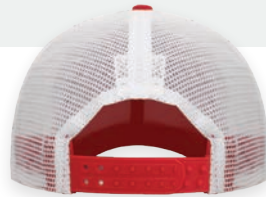
red



FABRIC CONSTRUCTION

Smooth suede | Charcoal sweatband |
6 Self-colour embroidered eyelets | 6 Panel cap | Curved peak |
Self-fabric and silver buckle closure

S18606 **SNAPBACK MESH CURVED PEAK**
(FASHION RANGE)



black/black



red/white

FABRIC CONSTRUCTION

100% Acrylic | 100% Polyester mesh back panels | Weight: 170g | 4 Needle stitch cotton twill sweatband |
2 Embroidered self-colour eyelets | 6 Panel structured (Nylon Buckram) |
Poly snapback closure | Curved peak with sticker

S12608 **SNAPBACK TWO-TONE** (FASHION RANGE)



black/orange



black/cerise



red/black



bottle/white



FABRIC CONSTRUCTION

100% Acrylic (10 x 10) 74 x 44 | 4 Needle stitch cotton twill sweatband |
6 Embroidered contrast eyelets | 6 Panel structured (Nylon Buckram) |
Poly snapback closure | Flat contrast peak with sticker

17610 **FASHION SUEDE** (FASHION RANGE)



corduroy/suede



chambray/suede



FABRIC CONSTRUCTION

Corduroy fabric 6 panel cap with suede peak | Chambray fabric 5 panel with suede peak | 108g x 56g | 4 Needle stitch twill sweatband | Embroidered self-colour eyelets | Size: 56cm | Self-fabric buckle closure to accommodate adjustability | Pre-curved peak

6017 **THE BARK** (OUTDOOR RANGE)



FABRIC CONSTRUCTION

Enzyme wash chino twill | Weight: 260g | 4 Needle stitch twill sweatband | 6 Embroidered self-coloured eyelets | 6 Panel unstructured | Self-fabric back strap with metal buckle and tuck in return | Chocolate only

C10609 **REACTOR** (WORKWEAR RANGE)



neon orange/piping



neon orange



neon yellow/piping



neon yellow



FABRIC CONSTRUCTION

Neon deluxe polyester twill (100% Polyester) | 4 Needle stitch poly cotton twill sweatband |
6 Panel structured (Nylon Buckram) | 6 Embroidered self-colour eyelets |
Self-fabric velcro closure | Pre-curved peak

B14001 **BERET** (WORKWEAR RANGE)



FABRIC CONSTRUCTION

100% Polyester wool | Weight: 70g |
Inner lining | 2 Metal eyelets |
Sizes: 58cm and 61cm



royal



bottle



yellow



red

60352T **VISIBILITY** (WORKWEAR RANGE)



FABRIC CONSTRUCTION

100% Polyester | 4 Needle stitch poly cotton sweatband | 6 Self-coloured eyelets | 6 Panel structured (Nylon Buckram) | Reflective piping | Self-fabric velcro closure | Black underpeak | Reflective sandwich | Neon orange/black only

SV6038 **SECURITY CAP** (WORKWEAR RANGE)



FABRIC CONSTRUCTION

100% Acrylic | 4 Needle stitch twill sweatband | Embroidered self-colour eyelets | 6 Panel structured (Nylon Buckram) | Self-fabric velcro strap to accommodate adjustability | Pre-curved peak



bottle



navy

S13502 **AFTER GLOW CAP** (WORKWEAR RANGE)



lumo yellow



lumo orange



FABRIC CONSTRUCTION

100% Polyester | 4 Needle stitch poly cotton twill sweatband | 6 Embroidered self-colour eyelets |
5 Panel structured (Nylon Buckram) | Contrast velcro closure to accommodate adjustability |
Pre-curved peak | Reflective tape on edge of peak and along edge of panels

B1700 **TWO-TONE SLOUCH SKULL BEANIE** (COLD FORCE RANGE)



FABRIC CONSTRUCTION

Acrylic knit beanie |
One size fits all |
Label attached to beanie



navy/black



burgundy/black

VB004 **PROMO FLEECE BEANIE** (COLD FORCE RANGE)



powder blue



red



bottle



FABRIC CONSTRUCTION

Polar fleece | Available in 4 panel and 6 panel |
One size fits most |
Weight: 220g

B006 **POLAR FLEECE GLOVES** (COLD FORCE RANGE)



FABRIC CONSTRUCTION

Polar fleece |
Available in medium and large |
Weight: 220g



red



royal



bottle

B005 **POLAR FLEECE TASSEL SCARF** (COLD FORCE RANGE)



FABRIC CONSTRUCTION

Polar fleece scarf with fringe |
Size: 160cm x 20cm |
Weight: 220g

C10608 **COSA NOSTRA** (EXECUTIVE RANGE)



navy



khaki



FABRIC CONSTRUCTION

100% Chino twill pinstripe superior | 6 Panels with self-colour stitching (Two-tone Buckram) | 6 Row self-colour stitching on peak | Self-colour top button | 6 Embroidered self-colour eyelets | Velcro closure | Pre-curved peak

S17602 **ACTIVE 6 PANEL TRUCKER** (EXECUTIVE RANGE)



white/black



red/black

FABRIC CONSTRUCTION

Executive ottoman and self-colour stitching | Soft black nylon mesh | Black 4 needle stitched sweatband | 2 self-colour eyelets | Single row snapback | Fused Oxford Buckram | Pre-curved peak

H13700 ORIGINAL CUBAN HAT (MOULDED RANGE)



FABRIC CONSTRUCTION

100% Straw | Sizes: 57cm x 59cm |
Petersham band |
Print on band

H17005 TWO-TONE STRAW MENS FEDORA (MOULDED RANGE)



FABRIC CONSTRUCTION

Paper straw/two-tone straw | 4 Needle stitch poplin sweatband |
Polyester ribbon |
Self-colour brim stitching



navy



burgundy



chocolate

2022 | 2023

HEADWEAR
CATALOGUE